



# About StellarSpace

---

StellarSpace is a high-tech innovator founded by a core team from Tsinghua University, specializing in motion control algorithms and embodied core control systems. Built on advanced control technologies, we deliver an integrated architecture across the control, drive, and execution layers—enabling the next generation of industrial intelligence.

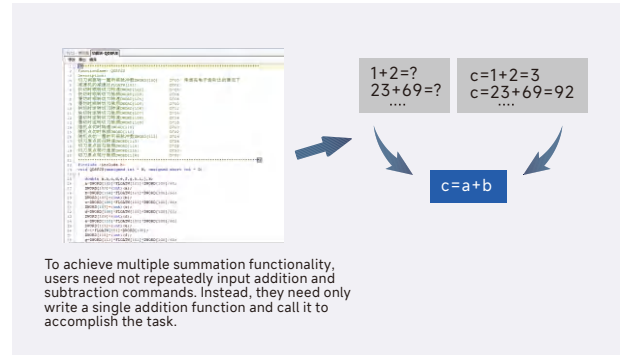
With a global vision, StellarSpace provides a full portfolio of PLCs, VFDs, HMIs, servo systems, and industrial motors. Our products are widely applied in emerging strategic industries, traditional industrial upgrading, and high-end equipment manufacturing. Leveraging the strong technical expertise of its Tsinghua-based team, StellarSpace deeply integrates advanced motion control algorithms with embodied core control systems into its offerings, providing customers with more intelligent, precise, and forward-looking application-oriented solutions.

StellarSpace is committed to advancing global industrial development and becoming an innovator in industrial civilization.

# Rich Special Functions

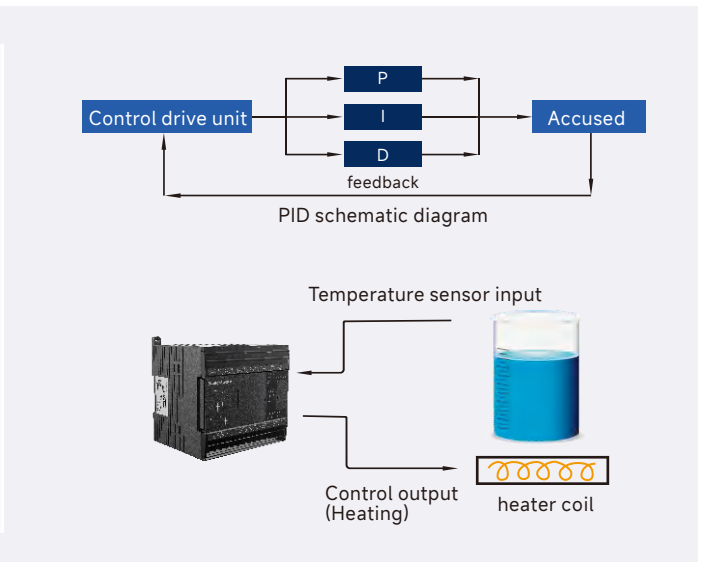
## C-Coded Function Blocks

- Enhanced Program Confidentiality:**  
 Once a user develops a functional module, it can be directly called wherever needed. The internal program is encrypted and remains invisible, ensuring better protection of intellectual property.
- Optimized Memory & Efficiency:**  
 Saves internal memory space and reduces engineering workload, leading to higher programming efficiency.
- Richer Set of Operational Functions:**  
 includes a subset of functions natively supported by the C language, expanding computational capabilities.
- Support for Local and Global Variables:**  
 Provides flexible variable management within and across function blocks.



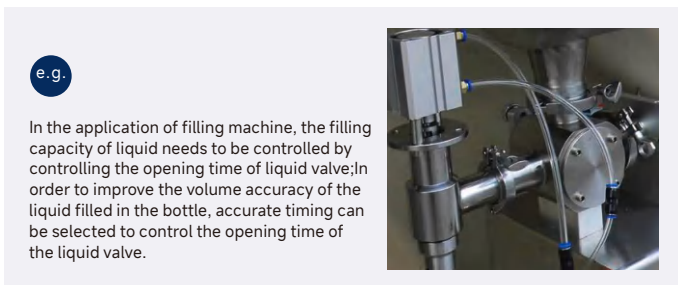
## Body PID control

- PLC body supports PID control command and provides self-tuning function, which is more flexible to use.
- Users can get the best sampling time and PID parameter value through self-tuning, so as to improve the control accuracy.
- It has two control modes: step response method and critical oscillation method, which can be applied to more applications.



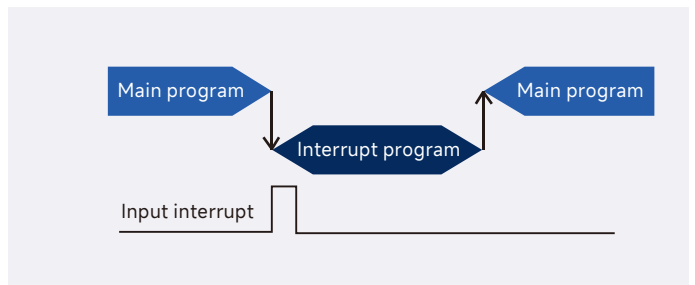
## Precise timing

Timing interrupt instruction can realize accurate timing in 1ms, and the timing range is 10 ~ 99ms.



## Interrupt function

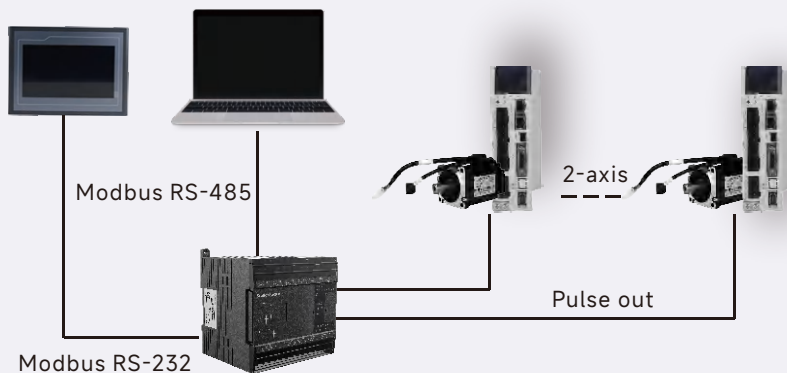
- Some special operations can be realized by calling interrupt, which is not affected by the scanning cycle of PLC.
- Interrupts include high-speed counting interrupts, external interrupts, and timing interrupts.



## High speed pulse output

### Positioning control

A transistor output PLC typically features high-speed pulse output for 2/4 axes, with a frequency of up to 200 kHz.



### Application

- ✦ Forming shear

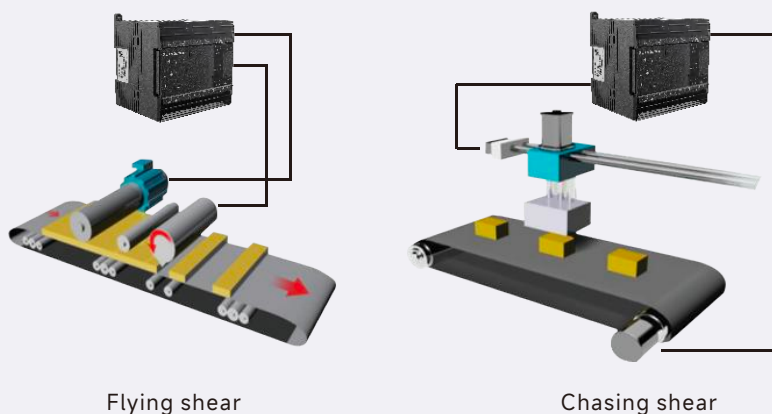


- ✦ Cup making machine



### Sport control

CDMH series PLC has the function of motion control, and supports the functions of chasing shear, flying shear, custom electronic cam and so on.



### Application

- ✦ Dual Flying Shear Corner Forming Machine

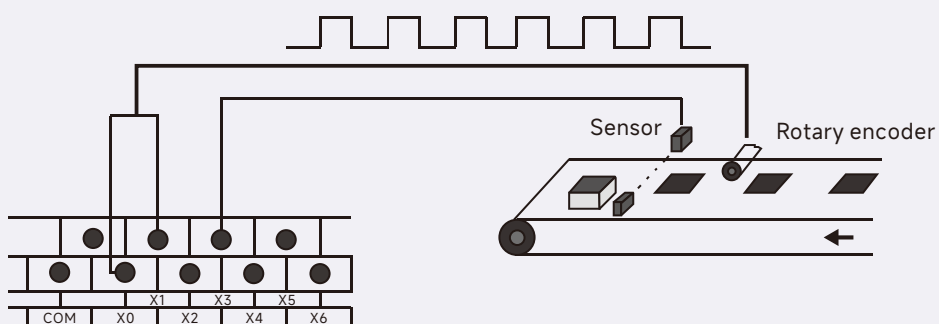


- ✦ Steel Sheet Cutter



## High speed counting input

PLC generally has 2 high-speed counting functions, single-phase up to 80kHz, AB phase up to 100kHz, can be directly connected to the rotary encoder to count the input of the encoder.

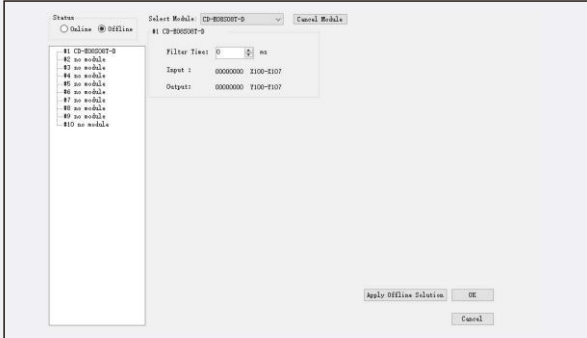


# CDPPRO

## CDPLC programming software fully supports CD1 / CD3 / CDM series PLC Easy-to-use configuration function

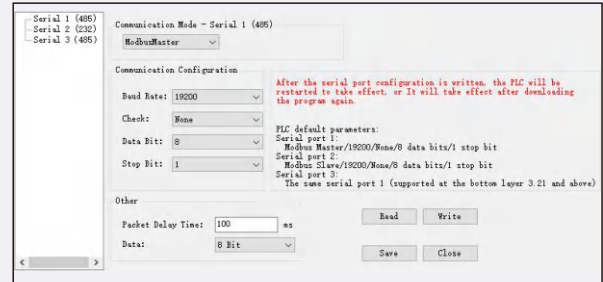
### Module configuration

Directly connected expansion modules can be configured



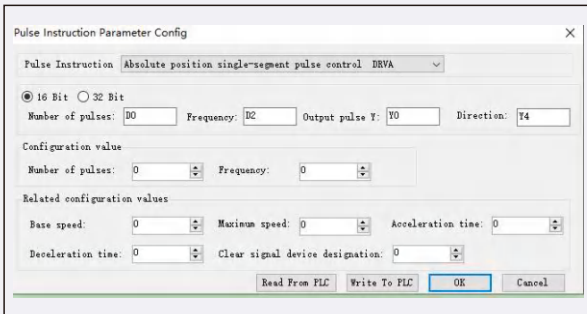
### Serial communication configuration

- ✦ The COM1-COM2 serial ports of PLC can be configured.
- ✦ MODBUS-RTU, Freeport communication, Mitsubishi communication protocol can be configured.

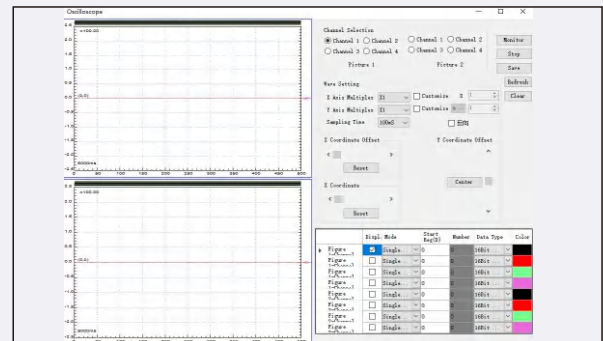


### Pulse command configuration function

- ✦ According to the actual application needs, you can choose your own pulse instructions, detailed parameter configuration, and programming is more convenient.



- ✦ With oscilloscope detection function, it can detect the pulse curve sent by the pulse port.



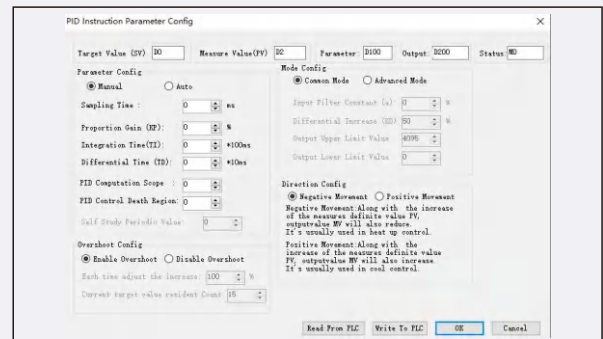
### Complex command panel configuration to improve programming efficiency

For commands with many and complex parameters such as CAM electronic cam, CANopen, PID, etc., a simple and easy-to-operate command editing panel is provided. After filling in the corresponding parameters, the command is generated

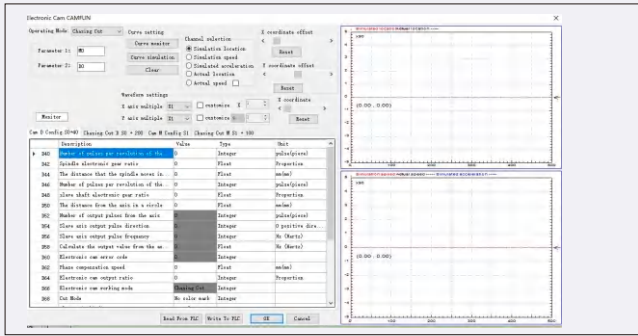
#### ·CANopen interface



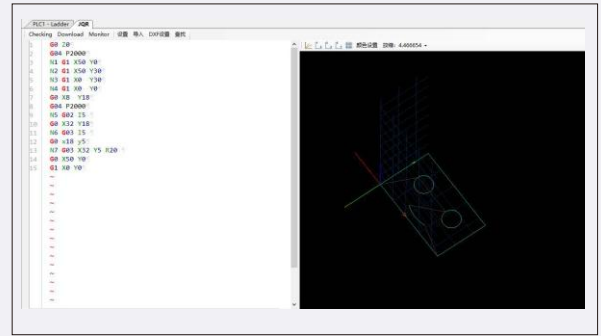
#### ·PID interface



## · Cam interface

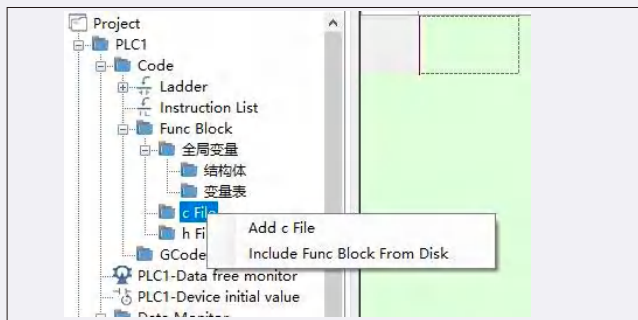


## · Interpolation interface



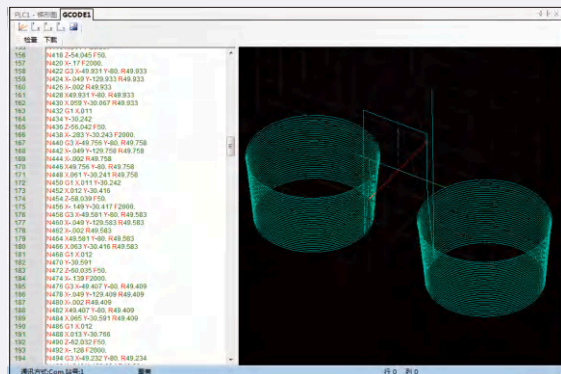
## Advanced Language Editing Capabilities

- Supports ladder diagram and command language programming, with seamless switching between the two to accommodate user preferences.
- Features an integrated C language and G-code function block library. Access to library functions requires registration for our cloud account and subsequent login via the host computer software. Function blocks may be freely imported and exported.
- C language function blocks may be directly developed within our host computer software without switching to dedicated C programming environments.



## Powerful Multi-Axis Motion Control

- Supports direct compilation of G-code
- Utilises CAD-based G-code import functionality
- Powerful graphical simulation with real-time machining progress monitoring

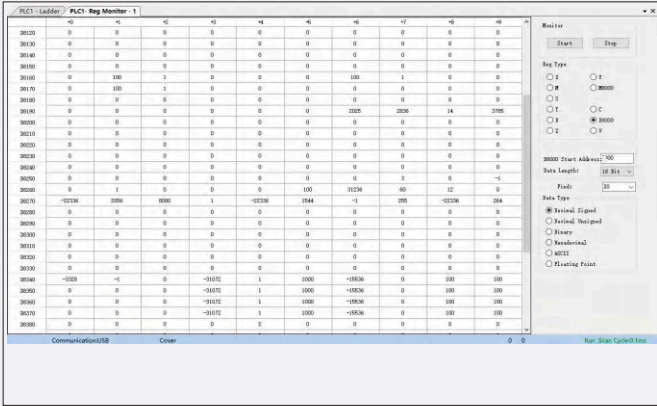


名称	初始值	单位	说明
XYZ最高速度	15000.0000	FF64	
XYZ最高加速度	100.0000	FF64	
XYZ最高减速度	0.0000	FF64	
XYZ最高加加速度	0.0000	FF64	
ABC最高速度	0.0000	FF64	
ABC最高加速度	0.0000	FF64	
ABC最高减速度	0.0000	FF64	
ABC最高加加速度	0.0000	FF64	
XYZ最大速度百分比	0	INT16U	
XYZ最大加速度百分比	0	INT16U	
XYZ最大减速度百分比	0	INT16U	
XYZ最大加加速度百分比	0	INT16U	
ABC最大速度百分比	0	INT16U	
ABC最大加速度百分比	0	INT16U	
ABC最大减速度百分比	0	INT16U	
ABC最大加加速度百分比	0	INT16U	

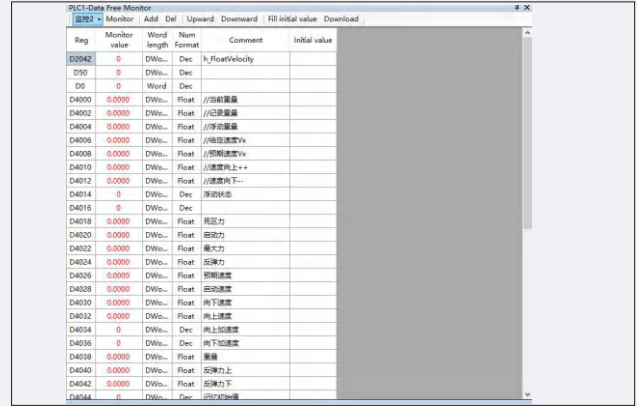
# Monitoring function

- Users can realize multi-data and multi-window free monitoring according to their own classification habits.
- Users can choose the soft components they need to monitor according to their needs, which is convenient for debugging.

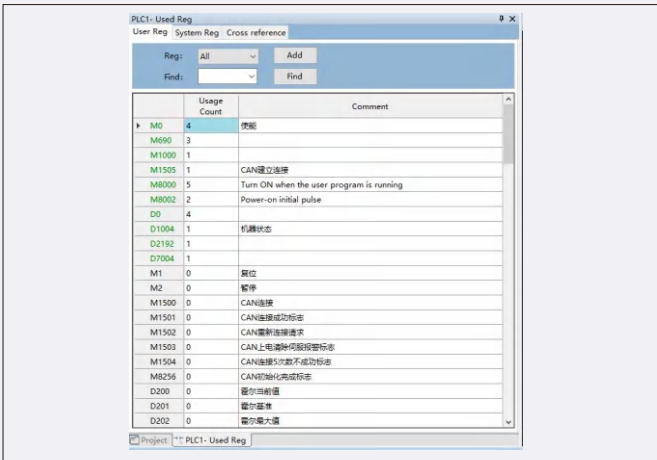
## Data monitoring



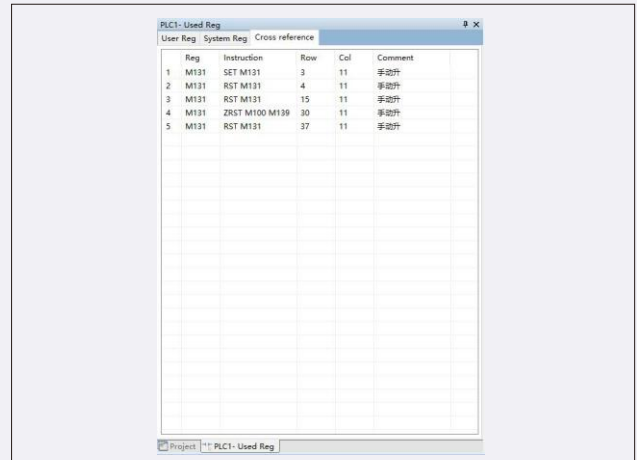
## Data monitoring



## Used soft components

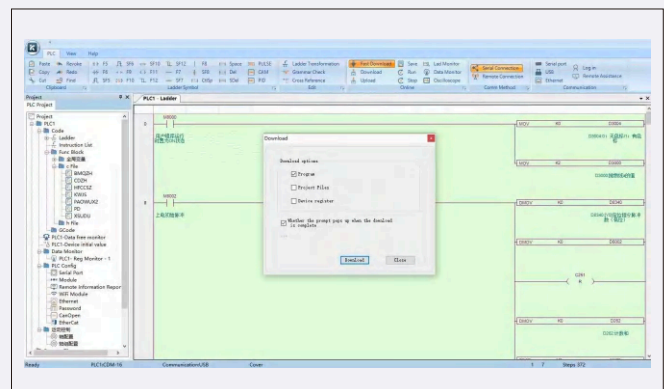
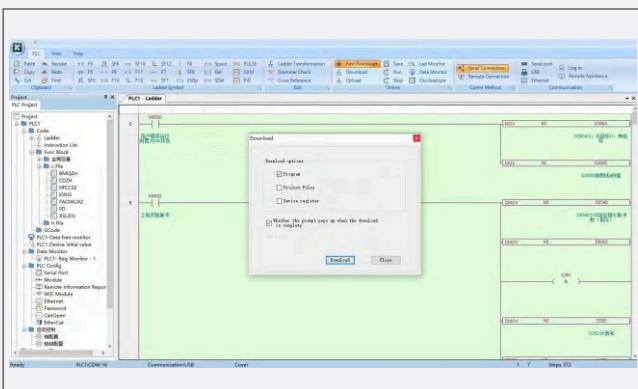


## Cross reference



# Program download

Program download is divided into ordinary download and fast download. Ordinary download can upload programs, fast download is confidential download and cannot be uploaded.



## Basic Model

### CD1 series

It possesses general data processing capabilities but does not support right-side expansion or the connection of BD Boards.

- Program capacity 224KB
- Basic instruction 0.02 ~ 0.05us
- Maximum I/O 60 points
- RS232、RS485
- I/O Sequence Control
- USB



### Performance specifications

Product series CD1-		M0808R/T0	T2	M1410R/T0	T2	M1814R/T0	T2	M2820R	T2	M3624R	T2
Body I/O	Total points	16		24		32		48		60	
	Input points	8		14		18		28		36	
	Output points	8		10		14		20		24	
Maximum I / O points		16		24		32		48		60	
High speed positioning	Normal pulse output	-	2roads	-	2roads	-	2roads	-	2roads	-	2roads
	Differential pulse output	-									
High speed input	Single phase / AB mode	2 road									
	Input mode	OC(Open Collector)									
Expansion capability	Right expansion module	-									
	Left expansion module	-									
	BD board	-									
interrupt	External interrupt	6		6		6		6		6	
	Timing interrupt	3		3		3		3		3	
	Other interrupt	High-Speed Counter Interrupt									
Communica- tion function	Communication port	RS232*1、RS485*1、USB*1									
	Communication protocol	Standard MODBUS RTU Protocol、Free-Port Communication、Mitsubishi Communication Protocol									
Analog value 2AD2DA / (X)		-									
Electronic cam / (C)		-									
Canopen function / (N)		-									
2G / WiFi module / 4G / (2 / W / 4)		-									
PWM pulse width modulation		support									
frequency measurement		support									
Precise timing		support									
Multi station control		support									
Program execution mode		Top-down Cyclic Scanning Method									
Programming mode		Simultaneous Support for Instruction List, Ladder Diagram, and C Language									
Power failure holding		Utilizes Flash ROM and a lithium backup battery (3V coin cell)									
Basic instruction processing speed		0.04us									
User program capacity (confidential download mode)		224K									

## CD1 series model list

Model (additional function model to be determined)						
AC power supply				DC power supply		
NPN/ PNP type	Relay output	Transistor output	Transistor,relay hybrid output	Relay output	Transistor output	Transistor,relay hybrid output
	CD1-M0808R-A	CD1-M0808T0-A	-	-	-	-
		CD1-M0808T2-A	-	-	-	-
	CD1-M1410R-A	CD1-M1410T0-A	-	-	-	-
		CD1-M1410T2-A	-	-	-	-
	CD1-M1814R-A	CD1-M1814T0-A	-	-	-	-
		CD1-M1814T2-A	-	-	-	-
	CD1-M2820R-A	CD1-M2820T2-A	-	-	-	-
	CD1-M3624R-A	CD1-M3624T2-A	-	-	-	-

Product series CD1-		M0808R/T0/T2	M1410R/T0/T2	M1814R/T0/T2	M2820R/T2	M3624R/T2	
Security function		Fast (confidential) Download					
Self diagnosis function		Power on self-testing, monitoring timer, grammar check					
Real time clock		Built in clock, powered by lithium battery, can be saved after power failure					
SD card expansion		—					
Bit soft element	Input relay (x)	X0~X7	X0~X15	X0~X21	X0~X33	X0~X43	
	Output relay (y)	Y0~Y7	Y0~Y11	Y0~Y15	Y0~Y23	Y0~Y27	
	Auxiliary relay	General M	500 Points: M0~M499				
		M for power failure holding	1036 Points: M500~M1535				
		Special M	512 Points: M8000~M8511				
	technological process	General S	1024 Points: S0~S1023				
		S for power failure holding	—				
	timer	Specifications	100ms timer, 10ms timer, 1ms timer				
		General T	256 Points: T0~T255				
		T for power failure holding	—				
	Counter	Specifications	16-bit counter, 32-bit counter				
		General C	16 Bit: C0~C99				
C for power failure holding		16 Bit: C100~C199 32 Bit: C200~C234					
Word Soft Element	Data register	General D	200 Points: D0~D199				
		D for power failure holding	7800 Points: D200~D7999				
		Special D	512 Points: D8000~D8511				

## Standard Model

### CD3 series

In addition to standard data processing capabilities, it features specialised functions such as pulse output and high-speed counting, alongside enhanced processing speeds. It supports connection to right-expansion modules and BD boards.



- Program capacity 384KB    ·Basic Instructions 0.02~0.05us    ·USB
- I/O Sequence Control    ·2~4 channels 200kHz Pulse Output    ·Maximum I/O 220 points
- 1~2 channels High-Speed Counter(Single-phase、AB-phase Up to 100K)    ·RS232、RS485

### Performance specifications

Product series CD3-		M0808T2	R	M1410R	T2	M1814R	T2	T4	M2820R	T2	T4	M3624R	T2	T4
Body I/O	Total points	16		24		32			48			60		
	Input points	8		14		18			28			36		
	Output points	8		10		14			20			24		
Maximum I / O points		176		184		192			208			220		
High speed positioning	Normal pulse output	2 roads	-	-	2roads	-	2roads	4roads	-	2roads	4roads	-	2roads	4roads
	Differential pulse output	-												
High speed input	Single phase / AB mode	2 roads												
	Input mode	OC( Open Collector)												
Expansion capability	Right expansion module	10												
	Left expansion module	-												
	BD board	-		1 road		1 road			2 roads			2 roads		
interrupt	External interrupt	6		6		6			6			6		
	Timing interrupt	3		3		3			3			3		
	Other interrupt	High-Speed Counter Interrupt												
Communication function	Communication port	RS232*1、RS485*1、USB*1												
	Communication protocol	Standard MODBUS RTU Protocol、Free-Port Communication、Mitsubishi Communication Protocol												
Analog value 2AD2DA / (X)		-												
Electronic cam / (C)		-												
Canopen function / (N)		-												
2G / WiFi module / 4G / (2 / W / 4)		-												
PWM pulse width modulation		support												
frequency measurement		support												
Precise timing		support												
Multi station control		support												
Program execution mode		Top-down Cyclic Scanning Method												
Programming mode		Simultaneous Support for Instruction List, Ladder Diagram, and C Language												
Power failure holding		Utilizes Flash ROM and a lithium backup battery (3V coin cell)												
Basic instruction processing speed		0.04us												
User program capacity (confidential download mode)		384KB												

## CD3 series model list

Model (additional function model to be determined)						
AC power supply				DC power supply		
NPN/ PNP type	Relay output	Transistor output	Transistor,relay hybrid output	Relay output	Transistor output	Transistor,relay hybrid output
	CD3-M0808R-A	CD3-M0808T2-A	-	-	-	-
	CD3-M1410R-A	CD3-M1410T2-A	-	-	-	-
	CD3-M1814R-A	CD3-M1814T2-A	-	-	-	-
		CD3-M1814T4-A	-	-	-	-
	CD3-M2820R-A	CD3-M2820T2-A	-	-	-	-
		CD3-M2820T4-A	-	-	-	-
	CD3-M3624R-A	CD3-M3624T2-A	-	-	-	-
		CD3-M3624T4-A	-	-	-	-

Product series CD3-		M0808R/T2	M1410R/T2	M1814R/T2/T4	M2820R/T2/T4	M3624R/T2/T4	
Security function		Fast (confidential) Download					
Self diagnosis function		Power on self-testing, monitoring timer, grammar check					
Real time clock		Built in clock, powered by lithium battery, can be saved after power failure					
SD card expansion		—					
Bit soft element	Input relay (x)	X0~X7	X0~X15	X0~X21	X0~X33	X0~X43	
	Output relay (y)	Y0~Y7	Y0~Y11	Y0~Y15	Y0~Y23	Y0~Y27	
	Auxiliary relay	General M	500 Points: M0~M499				
		M for power failure holding	1036 Points: M500~M1535				
		Special M	512 Points: M8000~M8511				
	technological process	General S	1024 Points: S0~S1023				
		S for power failure holding	—				
	timer	Specifications	100ms timer, 10ms timer, 1ms timer				
		General T	256 Points: T0~T255				
		T for power failure holding	—				
	Counter	Specifications	16-bit counter, 32-bit counter				
		General C	16 Bit: C0~C99				
C for power failure holding		16 Bit: C100~C199    32 Bit: C200~C234					
Word Soft Element	Data register	General D	200 Points: D0~D199				
		D for power failure holding	7800 Points: D200~D7999				
		Special D	512 Points: D8000~D8511				

## Enhanced Model

### CD3T series

In addition to standard data processing capabilities, it features specialised functions such as pulse output and high-speed counting, alongside enhanced processing speeds. It supports connection to right-expansion modules and BD boards.

- Program capacity 384KB
- Basic Instructions 0.02~0.05us
- 2~4 channels 200kHz Pulse Output
- Maximum I/O 220 points
- CANopen Function
- I/O Sequence Control
- RS232, RS485
- USB
- 1~2 channels High-Speed Counter(Single-phase, AB-phase Up to 100K)
- Host analogue signal



### Performance specifications

Product series CD3T-		M0808T2	R	M1410R	T2	M1814R	T2	T4	M2820R	T2	T4	M3624R	T2	T4
Body I/O	Total points	16		24		32		48		60				
	Input points	8		14		18		28		36				
	Output points	8		10		14		20		24				
Maximum I / O points		176		184		192		208		220				
High speed positioning	Normal pulse output	2 roads	-	-	2 roads	-	2 roads	4 roads	-	2 roads	4 roads	-	2 roads	4 roads
	Differential pulse output	-												
High speed input	Single phase / AB mode	2 roads												
	Input mode	OC( Open Collector)												
Expansion capability	Right expansion module	10												
	Left expansion module	-												
	BD board	-		1 road		1 road		2 roads		2 roads				
interrupt	External interrupt	6		6		6		6		6				
	Timing interrupt	3		3		3		3		3				
	Other interrupt	High-Speed Counter Interrupt												
Communication function	Communication port	RS232*1、RS485*2、USB*1												
	Communication protocol	Standard MODBUS RTU Protocol、Free-Port Communication、Mitsubishi Communication Protocol												
Analog value 2AD2DA / (X)		-		support		-								
Electronic cam / (C)		-												
Canopen function / (N)		-		support										
2G / WiFi module / 4G / (2 / W / 4)		-												
PWM pulse width modulation		support												
frequency measurement		support												
Precise timing		support												
Multi station control		support												
Program execution mode		Top-down Cyclic Scanning Method												
Programming mode		Simultaneous Support for Instruction List, Ladder Diagram, and C Language												
Power failure holding		Utilizes Flash ROM and a lithium backup battery (3V coin cell)												
Basic instruction processing speed		0.04us												
User program capacity (confidential download mode)		384KB												

## CD3T series model list

Model (additional function model to be determined)						
AC power supply				DC power supply		
NPN/ PNP type	Relay output	Transistor output	Transistor,relay hybrid output	Relay output	Transistor output	Transistor,relay hybrid output
	CD3T-M0808R-A	CD3T-M0808T2-A	-	-	-	-
	CD3T-M1410R-A	CD3T-M1410T2-A	-	-	-	-
	CD3T-M1814R-A	CD3T-M1814T2-A	-	-	-	-
		CD3T-M1814T4-A	-	-	-	-
	CD3T-M2820R-A	CD3T-M2820T2-A	-	-	-	-
		CD3T-M2820T4-A	-	-	-	-
	CD3T-M3624R-A	CD3T-M3624T2-A	-	-	-	-
		CD3T-M3624T4-A	-	-	-	-

Product series CD3T-		M0808R/T2	M1410R/T2	M1814R/T2/T4	M2820R/T2/T4	M3624R/T2/T4	
Security function		Fast (confidential) Download					
Self diagnosis function		Power on self-testing, monitoring timer, grammar check					
Real time clock		Built in clock, powered by lithium battery, can be saved after power failure					
SD card expansion		—					
Bit soft element	Input relay (x)	X0~X7	X0~X15	X0~X21	X0~X33	X0~X43	
	Output relay (y)	Y0~Y7	Y0~Y11	Y0~Y15	Y0~Y23	Y0~Y27	
	Auxiliary relay	General M	500 Points: M0~M499				
		M for power failure holding	1036 Points: M500~M1535				
		Special M	512 Points: M8000~M8511				
	technological process	General S	1024 Points: S0~S1023				
		S for power failure holding	—				
	timer	Specifications	100ms timer, 10ms timer, 1ms timer				
		General T	256 Points: T0~T255				
		T for power failure holding	—				
	Counter	Specifications	16-bit counter, 32-bit counter				
		General C	16 Bit: C0~C99				
C for power failure holding		16 Bit: C100~C199 32 Bit: C200~C234					
Word Soft Element	Data register	General D	200 Points: D0~D199				
		D for power failure holding	7800 Points: D200~D7999				
		Special D	512 Points: D8000~D8511				

## Ethernet Communication Model

### CD3E series

In addition to standard data processing capabilities, it features specialised functions such as pulse output and high-speed counting, alongside enhanced processing speeds. It supports connection to right-expansion modules and BD boards.

- Program capacity 384KB
- CANopen Function
- Basic Instructions 0.02~0.05us
- RS232、RS485
- Maximum I/O 220 points
- I/O Sequence Control
- 2~4 channels 200kHz Pulse Output
- LAN
- 1~2 channels High-Speed Counter(Single-phase、AB-phase Up to 100K)
- Host analogue signal



### Performance specifications

Product series CD3E-		M0808T2	R	M1410R	T2	M1814R	T2	T4	M2820R	T2	T4	M3624R	T2	T4
Body I/O	Total points	16		24		32			48			60		
	Input points	8		14		18			28			36		
	Output points	8		10		14			20			24		
Maximum I / O points		176		184		192			208			220		
High speed positioning	Normal pulse output	2 roads	-	-	2roads	-	2roads	4roads	-	2roads	4roads	-	2roads	4roads
	Differential pulse output	-												
High speed input	Single phase / AB mode	2 roads												
	Input mode	OC( Open Collector)												
Expansion capability	Right expansion module	10												
	Left expansion module	-												
	BD board	-		1 road		1 road			2 roads			2 roads		
interrupt	External interrupt	6		6		6			6			6		
	Timing interrupt	3		3		3			3			3		
	Other interrupt	High-Speed Counter Interrupt												
Communication function	Communication port	RS232*1、RS485*2、USB*1、LAN*1												
	Communication protocol	Standard MODBUS RTU Protocol、Free-Port Communication、Mitsubishi Communication Protocol												
Analog value 2AD2DA / (X)		-		support		-								
Electronic cam / (C)		-												
Canopen function / (N)		-		support										
2G / WiFi module / 4G / (2 / W / 4)		-												
PWM pulse width modulation		support												
frequency measurement		support												
Precise timing		support												
Multi station control		support												
Program execution mode		Top-down Cyclic Scanning Method												
Programming mode		Simultaneous Support for Instruction List, Ladder Diagram, and C Language												
Power failure holding		Utilizes Flash ROM and a lithium backup battery (3V coin cell)												
Basic instruction processing speed		0.04us												
User program capacity (confidential download mode)		384KB												

## CD3E series model list

Model (additional function model to be determined)						
AC power supply				DC power supply		
NPN/ PNP type	Relay output	Transistor output	Transistor,relay hybrid output	Relay output	Transistor output	Transistor,relay hybrid output
	CD3E-M0808R-A	CD3E-M0808T2-A	-	-	-	-
	CD3E-M1410R-A	CD3E-M1410T2-A	-	-	-	-
	CD3E-M1814R-A	CD3E-M1814T2-A	-	-	-	-
		CD3E-M1814T4-A	-	-	-	-
	CD3E-M2820R-A	CD3E-M2820T2-A	-	-	-	-
		CD3E-M2820T4-A	-	-	-	-
	CD3E-M3624R-A	CD3E-M3624T2-A	-	-	-	-
		CD3E-M3624T4-A	-	-	-	-

Product series CD3E-		M0808R/T2	M1410R/T2	M1814R/T2/T4	M2820R/T2/T4	M3624R/T2/T4	
Security function		Fast (confidential) Download					
Self diagnosis function		Power on self-testing, monitoring timer, grammar check					
Real time clock		Built in clock, powered by lithium battery, can be saved after power failure					
SD card expansion		—					
Bit soft element	Input relay (x)	X0~X7	X0~X15	X0~X21	X0~X33	X0~X43	
	Output relay (y)	Y0~Y7	Y0~Y11	Y0~Y15	Y0~Y23	Y0~Y27	
	Auxiliary relay	General M	500 Points: M0~M499				
		M for power failure holding	1036 Points: M500~M1535				
		Special M	512 Points: M8000~M8511				
	technological process	General S	1024 Points: S0~S1023				
		S for power failure holding	—				
	timer	Specifications	100ms timer, 10ms timer, 1ms timer				
		General T	256 Points: T0~T255				
		T for power failure holding	—				
	Counter	Specifications	16-bit counter, 32-bit counter				
		General C	16 Bit: C0~C99				
C for power failure holding		16 Bit: C100~C199    32 Bit: C200~C234					
Word Soft Element	Data register	General D	200 Points: D0~D199				
		D for power failure holding	7800 Points: D200~D7999				
		Special D	512 Points: D8000~D8511				

## Motion Control Model

### CDM series

In addition to all the features of the Standard Model PLC, it can be optionally enhanced with functions such as Electronic CAM and CANopen bus communication.

- Program capacity 384KB
- CANopen Function
- Basic Instructions 0.02~0.05us
- RS232、RS485
- Maximum I/O 220 points
- I/O Sequence Control
- 2~4 channels 200kHz Pulse Output
- Electronic CAM
- 1~2 channels High-Speed Counter(Single-phase、AB-phase Up to 100K)
- Host analogue signal
- USB



### Performance specifications

Product series CDM-		M0808T2	M1410T2	M1814T2	M1814T4	M2820T2	M2820T4	M3624T2	M3624T4
Body I/O	Total points	16	24	32		48		60	
	Input points	8	14	18		28		36	
	Output points	8	10	14		20		24	
Maximum I / O points		176	184	192		208		220	
High speed positioning	Normal pulse output	2 roads	2 roads	2 roads	4 roads	2 roads	4 roads	2 roads	4 roads
	Differential pulse output	-							
High speed input	Single phase / AB mode	2 roads							
	Input mode	OC( Open Collector)							
Expansion capability	Right expansion module	10							
	Left expansion module	-							
	BD board	-	1 road	1 road		2 roads		2 roads	
interrupt	External interrupt	6	6	6		6		6	
	Timing interrupt	3	3	3		3		3	
	Other interrupt	High-Speed Counter Interrupt							
Communication function	Communication port	RS232*1、RS485*2、USB*1							
	Communication protocol	Standard MODBUS RTU Protocol、Free-Port Communication、Mitsubishi Communication Protocol							
Analog value 2AD2DA / (X)		-	support	-					
Electronic cam / (C)		support							
Canopen function / (N)		-	support						
2G / WiFi module / 4G / (2 / W / 4)		-							
PWM pulse width modulation		support							
frequency measurement		support							
Precise timing		support							
Multi station control		support							
Program execution mode		Top-down Cyclic Scanning Method							
Programming mode		Simultaneous Support for Instruction List, Ladder Diagram, and C Language							
Power failure holding		Utilizes Flash ROM and a lithium backup battery (3V coin cell)							
Basic instruction processing speed		0.04us							
User program capacity (confidential download mode)		384KB							

## CDM series model list

Model (additional function model to be determined)						
AC power supply				DC power supply		
NPN/ PNP type	Relay output	Transistor output	Transistor,relay hybrid output	Relay output	Transistor output	Transistor,relay hybrid output
	-	CDM-M0808T2-A	-	-	-	-
	-	CDM-M1410T2-A	-	-	-	-
	-	CDM-M1814T2-A	-	-	-	-
	-	CDM-M1814T4-A	-	-	-	-
	-	CDM-M2820T2-A	-	-	-	-
	-	CDM-M2820T4-A	-	-	-	-
	-	CDM-M3624T2-A	-	-	-	-
	-	CDM-M3624T4-A	-	-	-	-

Product series CDM-		M0808T2	M1410T2	M1814T2/T4	M2820T2/T4	M3624T2/T4	
Security function		Fast (confidential) Download					
Self diagnosis function		Power on self-testing, monitoring timer, grammar check					
Real time clock		Built in clock, powered by lithium battery, can be saved after power failure					
SD card expansion		—					
Bit soft element	Input relay (x)	X0~X7	X0~X15	X0~X21	X0~X33	X0~X43	
	Output relay (y)	Y0~Y7	Y0~Y11	Y0~Y15	Y0~Y23	Y0~Y27	
	Auxiliary relay	General M	500 Points: M0~M499				
		M for power failure holding	1036 Points: M500~M1535				
		Special M	512 Points: M8000~M8511				
	technological process	General S	1024 Points: S0~S1023				
		S for power failure holding	—				
	timer	Specifications	100ms timer, 10ms timer, 1ms timer				
		General T	256 Points: T0~T255				
		T for power failure holding	—				
	Counter	Specifications	16-bit counter, 32-bit counter				
		General C	16 Bit: C0~C99				
C for power failure holding		16 Bit: C100~C199    32 Bit: C200~C234					
Word Soft Element	Data register	General D	200 Points: D0~D199				
		D for power failure holding	7800 Points: D200~D7999				
		Special D	512 Points: D8000~D8511				

## Bus-Based Motion Control Model

### CDMH series

Building on all the capabilities of the standard CDM platform, this controller adds advanced motion functions including linear and circular interpolation, along with integrated G-code support. It offers a simplified method for bus-axis control and can coordinate up to 16 axes via CANopen for complex multi-axis applications.

- Program capacity 384KB
- CANopen Function
- Basic Instructions 0.02~0.05us
- Interpolation, electronic cam, G-code
- Maximum I/O 220 points
- I/O Sequence Control
- 2-4 channels 200kHz Pulse Output
- Motion control command
- 1-2 channels High-Speed Counter(Single-phase, AB-phase Up to 100K)
- Host analogue signal
- RS232、RS485
- LAN



### Performance specifications

Product series CDMH-		M0808T2	R	M1410R	T2	M1814R	T2	T4	M2820R	T2	T4	M3624R	T2	T4
Body I/O	Total points	16		24		32			48			60		
	Input points	8		14		18			28			36		
	Output points	8		10		14			20			24		
Maximum I / O points		176		184		192			208			220		
High speed positioning	Normal pulse output	2 roads	-	-	2roads	-	2roads	4roads	-	2roads	4roads	-	2roads	4roads
	Differential pulse output	-												
High speed input	Single phase / AB mode	2 roads												
	Input mode	OC( Open Collector)												
Expansion capability	Right expansion module	10												
	Left expansion module	-												
	BD board	-		1 road		1 road			2 roads				2 roads	
interrupt	External interrupt	6		6		6			6			6		6
	Timing interrupt	3		3		3			3			3		3
	Other interrupt	High-Speed Counter Interrupt												
Communication function	Communication port	RS232*1、RS485*2、USB*1、LAN*1												
	Communication protocol	Standard MODBUS RTU Protocol、Free-Port Communication、Mitsubishi Communication Protocol												
Analog value 2AD2DA / (X)		-		support		-								
Electronic cam / (C)		support												
Canopen function / (N)		-		support										
2G / WiFi module / 4G / (2 / W / 4)		-												
PWM pulse width modulation		support												
frequency measurement		support												
Precise timing		support												
Multi station control		support												
Program execution mode		Top-down Cyclic Scanning Method												
Programming mode		Simultaneous Support for Instruction List, Ladder Diagram, and C Language												
Power failure holding		Utilizes Flash ROM and a lithium backup battery (3V coin cell)												
Basic instruction processing speed		0.04us												
User program capacity (confidential download mode)		384KB												

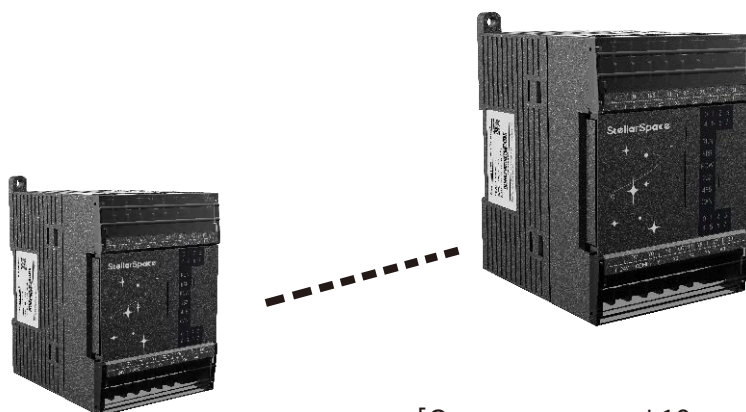
## CDMH series model list

Model (additional function model to be determined)						
AC power supply				DC power supply		
NPN/ PNP type	Relay output	Transistor output	Transistor,relay hybrid output	Relay output	Transistor output	Transistor,relay hybrid output
	CDMH-M0808R-A	CDMH-M0808T2-A	-	-	-	-
	CDMH-M1410R-A	CDMH-M1410T2-A	-	-	-	-
	CDMH-M1814R-A	CDMH-M1814T2-A	-	-	-	-
		CDMH-M1814T4-A	-	-	-	-
	CDMH-M2820R-A	CDMH-M2820T2-A	-	-	-	-
		CDMH-M2820T4-A	-	-	-	-
	CDMH-M3624R-A	CDMH-M3624T2-A	-	-	-	-
		CDMH-M3624T4-A	-	-	-	-

Product series CDMH-		M0808R/T2	M1410R/T2	M1814R/T2/T4	M2820R/T2/T4	M3624R/T2/T4	
Security function		Fast (confidential) Download					
Self diagnosis function		Power on self-testing, monitoring timer, grammar check					
Real time clock		Built in clock, powered by lithium battery, can be saved after power failure					
SD card expansion		—					
Bit soft element	Input relay (x)	X0~X7	X0~X15	X0~X21	X0~X33	X0~X43	
	Output relay (y)	Y0~Y7	Y0~Y11	Y0~Y15	Y0~Y23	Y0~Y27	
	Auxiliary relay	General M	500 Points: M0~M499				
		M for power failure holding	1036 Points: M500~M1535				
		Special M	512 Points: M8000~M8511				
	technological process	General S	1024 Points: S0~S1023				
		S for power failure holding	—				
	timer	Specifications	100ms timer, 10ms timer, 1ms timer				
		General T	256 Points: T0~T255				
		T for power failure holding	—				
	Counter	Specifications	16-bit counter, 32-bit counter				
		General C	16 Bit: C0~C99				
C for power failure holding		16 Bit: C100~C199 32 Bit: C200~C234					
Word Soft Element	Data register	General D	200 Points: D0~D199				
		D for power failure holding	7800 Points: D200~D7999				
		Special D	512 Points: D8000~D8511				

## Extension Unit

To meet the application requirements of a wider range of scenarios, the CD series (excluding the CD1 series) PLC base units can be equipped with a comprehensive range of I/O expansion modules, analogue input/output modules, and temperature control modules. The main unit can accommodate up to ten different types of right-hand expansion modules.



[Can max expand 10 modules]

### Right Extension Module

#### I/O Extension Module

- ✦ For expanding input and output points, with point counts ranging from 8 to 16 points, the basic unit can be extended by up to 160 points.
- ✦ Output expansion modules are available in two output types: transistor (T) and relay (R).

#### Analogue Expansion Module

- ✦ Features D/A and A/D conversion capabilities. By expanding with analogue input/output modules and temperature control modules, the CD series PLC can be deployed in process control systems for temperature, flow, liquid level, pressure, and other parameters.

Project	Specifications
Use environment	Places without corrosivity, flammability, conductivity and serious dust
ambient temperature	0°C~60°C
Storage ambient temperature	-25°C~75°C
ambient humidity	5~95%RH
Preservation of ambient humidity	5~95%RH
install	It can be directly installed on the 35mm wide electrical guide rail

## Right expansion module

### I/O Expansion Module

When the base unit's point capacity is insufficient to meet operational requirements, this type of expansion module may be employed. It enables the basic unit to be expanded by up to 160 additional points.



### Digital Input Module

Model	Function description	Specifications
NPN/PNP Input type		
CD-E16S-D	16-channel digital input, DC 24V power supply	Input filter time: 1–50 ms adjustable R: Relay output      T: Transistor output R: Response time <10 ms T: Response time <0.2 ms R maximum load: Resistive 2A, Inductive 80VA T maximum load: Maximum output current per point 0.3A

### Digital Output Module

Model	Function description	Specifications
CD-E16R-D	16-channel relay output, DC 24V power supply	Input filter time: 1–50 ms adjustable R: Relay output      T: Transistor output R: Response time <10 ms T: Response time <0.2 ms R maximum load: Resistive 2A, Inductive 80VA T maximum load: Maximum output current per point 0.3A
CD-E16T-D	16-channel transistor output, DC 24V power supply	

### Digital Input/Output Module

Model	Function description	Specifications
NPN/PNP Input type		
CD-E08S08R-D	8-channel digital input, 8-channel relay output, DC24V power supply	Input filter time: 1–50 ms, adjustable R: Relay output      T: Transistor output R: Response time under 10ms T: Response time under 0.2ms R maximum load: Resistive 2A, Inductive 80VA T maximum load: Maximum output current per point 0.3A
CD-E08S08T-D	8-channel digital input, 8-channel transistor output, DC 24V power supply	

### Analogue Expansion Module

Expansion analogue input/output module with digital-to-analogue and analogue-to-digital conversion capabilities.

#### Analogue Input/Output Hybrid Module (nADmDA Type)

Model	Number of channels	Input/output signals	Specifications
CD-E4AD2DA-D	6	Input voltage: 0–10 V Input current: 0–20 mA Output voltage: 0–10 V Output current: 0–20 mA	Power supply DC24±10%,150mA      Conversion speed 2ms/ch Input resolution 1/16383(14Bit) Output resolution 1/4095(12Bit)      AD filter coefficient 0-254 Overall accuracy ±1%      Add channel enable flag AD channels feature short-circuit/open-circuit/over-range detection



**StellarSpace**

Ver. No.: 2026-V1.0



Website QR Code



WeChat Official Account

**StellarSpace**

**StellarSpace (Shenzhen) Automation Technology Co., Ltd.**

📍 Room 6, No. 1421, Wuzhong Avenue, Wuzhong District, Suzhou City, Jiangsu Province

☎ Consultation Hotline: +86 400 888 5476